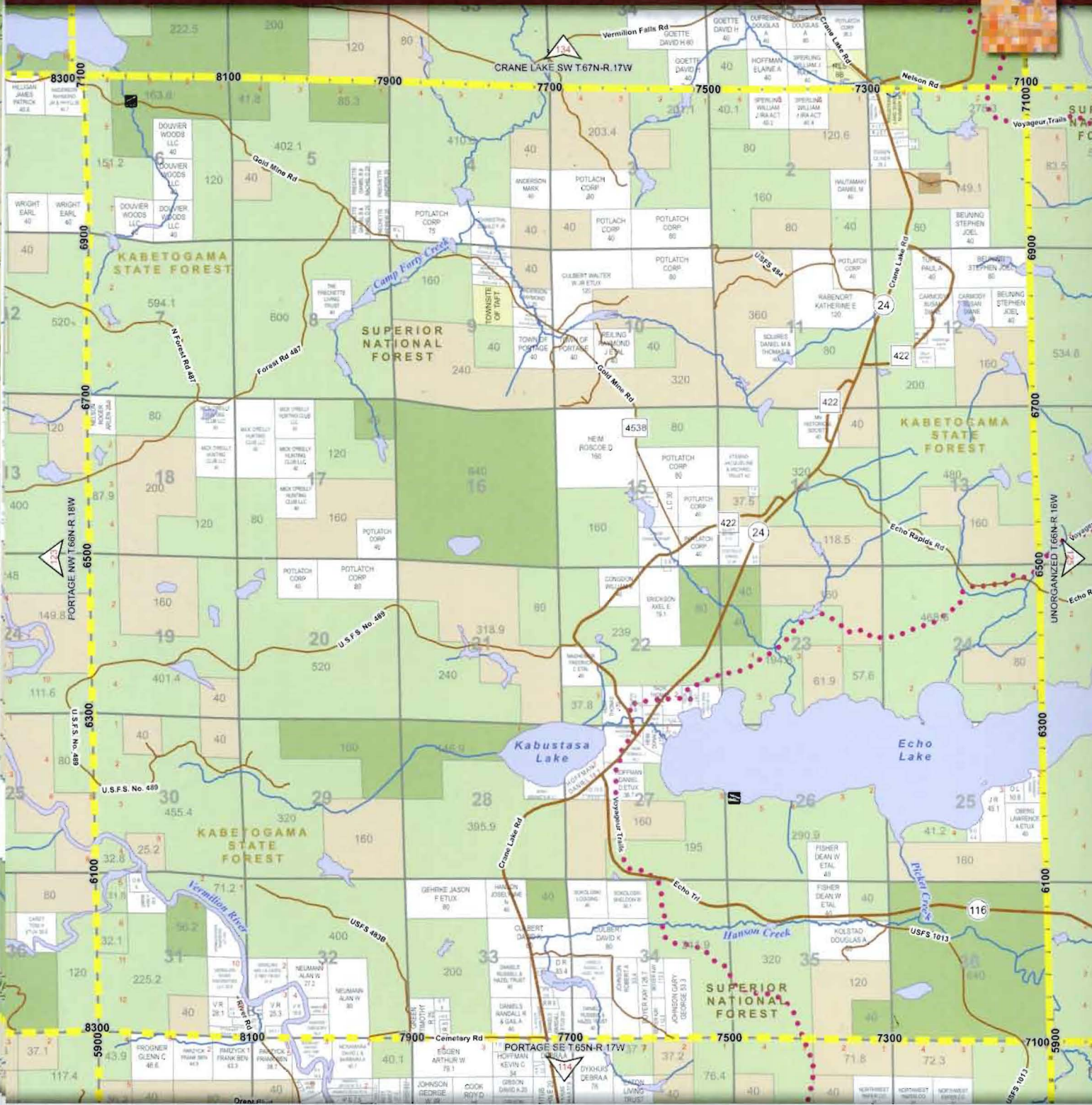


# PORTAGE (NE)

## T.66N-R.17W



### LEGEND

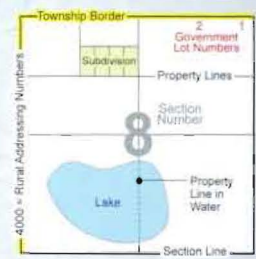
- |                    |                         |                                       |
|--------------------|-------------------------|---------------------------------------|
| CITY               | USA                     | LAKE                                  |
| INTERSTATE HIGHWAY | STATE OF MINNESOTA      | PIT LAKE                              |
| US HIGHWAY         | STATE OF MN TAX FORFEIT | DRY LAKE BED                          |
| MINNESOTA HIGHWAY  | ST. LOUIS COUNTY        | RIVER/STREAM                          |
| COUNTY ROADS       | PRIVATE                 | VOYAGEURS NATIONAL PARK               |
| LOCAL ROADS        | SUBDIVISION             | RESERVATION                           |
| RAILROADS          | TOWNSHIP                | NATIONAL FOREST                       |
| STATE TRAILS       | SECTION                 | STATE FOREST                          |
| CARRY-IN           | COUNTY                  | STATE PARK                            |
| BOAT LAUNCH        | MUNICIPALITY            | BOUNDARY WATERS CANOE AREA WILDERNESS |



0 0.5 1 MILES  
ONE SECTION = ONE MILE (APPROXIMATE)

**OWNERSHIP ABBREVIATIONS**  
 ETAL= AND OTHERS TRS= TRUSTEES  
 ETUX= AND WIFE TR= TRUST  
 ETVIR= AND HUSBAND REV TR= REVOCABLE TRUST  
 PRTN= PARTNERSHIP IRREV TR= IRREVOCABLE TRUST

**ROAD NAME ABBREVIATIONS**  
 AVE= AVENUE EXP= EXPRESSWAY ST= STREET  
 BLVD= BOULEVARD HWY= HIGHWAY TR= TERRACE  
 CL= CIRCLE LN= LANE TR= TRAIL  
 CT= COURT PKWY= PARKWAY WY= WAY  
 DR= DRIVE PL= PLACE  
 LP= LOOP RD= ROAD



© Copyright St. Louis County. All Rights Reserved. www.stlouiscounty.mn.gov

